



URhulumente  
weNtshona Koloni  
**NGOWAKHO**

UkuHlaliswa koLuntu



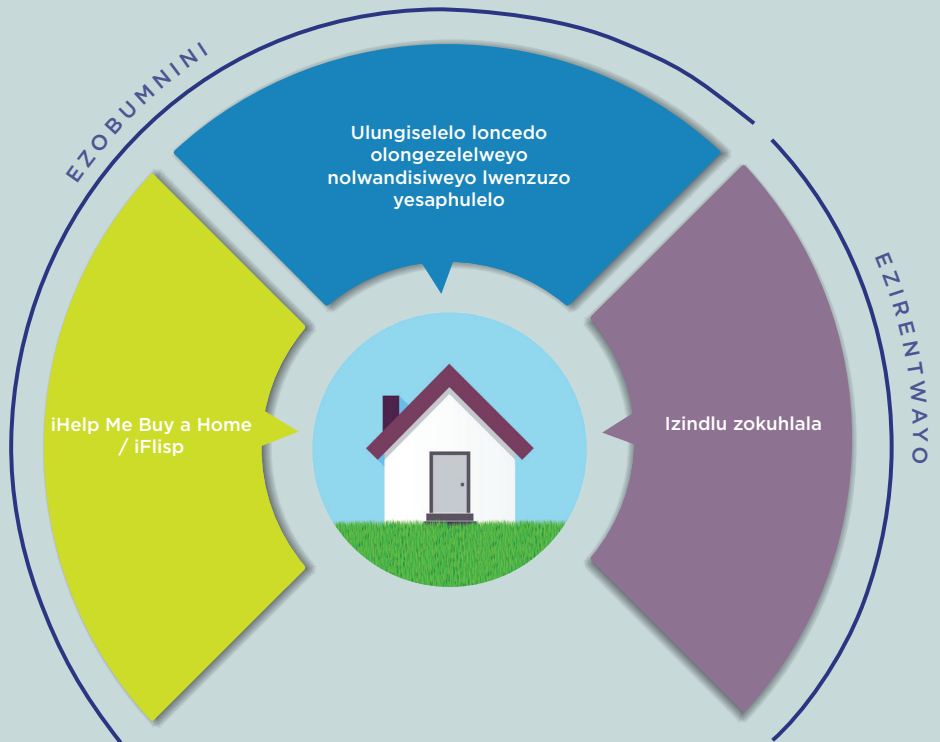
**UNCEDO LWENKXASO YEZINDLU**

**INGABA UMVUZO WAKHO WENYANGA UPHAKATHI KWAMA**

**R7 501 – R22 000** NGENYANGA?

**INGABA ULUMKILE NA NGOKUPHATHELELE KWIKHAYA?  
UYAZAZI NA EZINYE IINDLELA ZIKARHULUMENTE  
WAKHO ZOKUKHETHWA KWEZINDLU?**

**Ukuba uzuzwa umvuzo ophakathi kwama  
R7 501 ukuya kuma kwi - R22 000  
ungangofanelekileyo koku:**



**Ungafaka isicelo ngokuhambela iOfisi yeZindlu kaMasipala ekufutshane kuwe.**

**Yiba NOBULUMKO BEKHAYA** kwaye masiqwebele ikamva elingcono xa sibambene.

# INGABA UMVUZO WAKHO WENYANGA UPHAKATHI KWAMA R7 501 – R22 000 NGENYANGA?

IUkuba umvuzo wekhaya lakho uphakathi kwama-R7 501 ukuya kutsho kwi-R22 000 ungafaneleka ukuba ufumane kwezi ndlela zilandelayo zoncendo lwenkxaso yezindlu:



## **IHELP ME BUY A HOME / IFLISP**

Olu Ncedo lwenkxaso lungasetyenziswa ngabantu abathenga amakhaya okokuqala. Ungakwazi ukuthenga ngayo kwakhona isiza sokumisa indawo yokuhlala esinikwa iinkonzo okanye wakhe indlu entsha kwistendi esisesakho kakade UNcedo lweNkxaso luya bonelelwa kuxhomekeka kumgangatho womvuzo wakho yaye ingasetyenziswa ekuhliseni intlawulo yemali-mboleko yekhaya lakho yenyanga. Oku kuza kwenza ukuba imali-boleko yekhaya ibe nokufikeleleka. Ixabiso lesixa-mali soncedo lwenkxaso yekhaya lsebenza ngokomvuzo wekhaya lakho kwaye iphakathi kwama R30 001 - R130 505. Yakube imali-mboleko yakho yamkelekile, ungafaka isicelo usibhekise ngqo kwiSebe lokuHlaliswa koLuntu ucele uNcedo lwenkxaso eyaYanyaniswe eMalini yoMntu ngaMnye iHelp Me Buy a Home / iFLISP.



## **ULUNGISELELO LWENZUZO YESAPHULELO EYONGEZELELWEYO**

Le Nkqubo iza kukunceda ukuba ube nguMnini-khaya wezindlu ezazingaphambi ko-1994 zeZindlu ezaziRentwa zikaRhulumente R(uMasipala nePhondo). Ukuba ubusoloko urenta ipropati kaRhulumente okokoko kwangaphambi ko-1994, ungafaneleka kule Abanye ooMasipala sele bedlulisile uninzi lwezindlu zabo bazinikezela kubahlali abazisebenzisa phantsi koLungise-lelo lweNzuzo yeSaphulelo. Ukufaka izicelo kunye nemibuzo zingenziwa ngqo kumasipala wakho okufutshane nawe.



## **IZINDLU EZIRENTWAYO**

Ngolu Ncedo lweNkxaso ungafikelela kwindlu erentwayo okanye amagumbi aqeshiswayo. URhulumente ngoko ubonelela ngenkxaso-mali kumaziko ezindlu ezirentwayo ukuze alawule izindlu zerente, aze ahlawule ngoko isixa-mali esithotywayo serente, sisekelwe kumvuzo wekhaya wenyanga, kwiZiko leZindlu eziRentwayoto Imibuzo nokufakwa kwezicelo ingenziwa ngqo kumasipala okufuphi nawe.

Nceda qhagamshelana neSebe lokuHlaliswa koLuntu ukuze ufumane iinkcukacha ezithe vetshe:

Hambela kwa27 Wale Street, eKapa

Tsalela iDesika yoNcedo apha kule minxeba ilandelayo: 021 483 6488/0611/8984  
(NgoMvulo ukuya kutsho NgolweSihlanu ukusukela ngentsimbi yesi- 07:30-15:00)

Email [human.settlements@westerncape.gov.za](mailto:human.settlements@westerncape.gov.za); or

Hambela iwebhusayithi yeSebe:

**[www.westerncape.gov.za/dept/human-settlements](http://www.westerncape.gov.za/dept/human-settlements)**



URhulumente  
weNtshona Koloni  
**NGOWAKHO**

UkuHlaliswa koLuntu